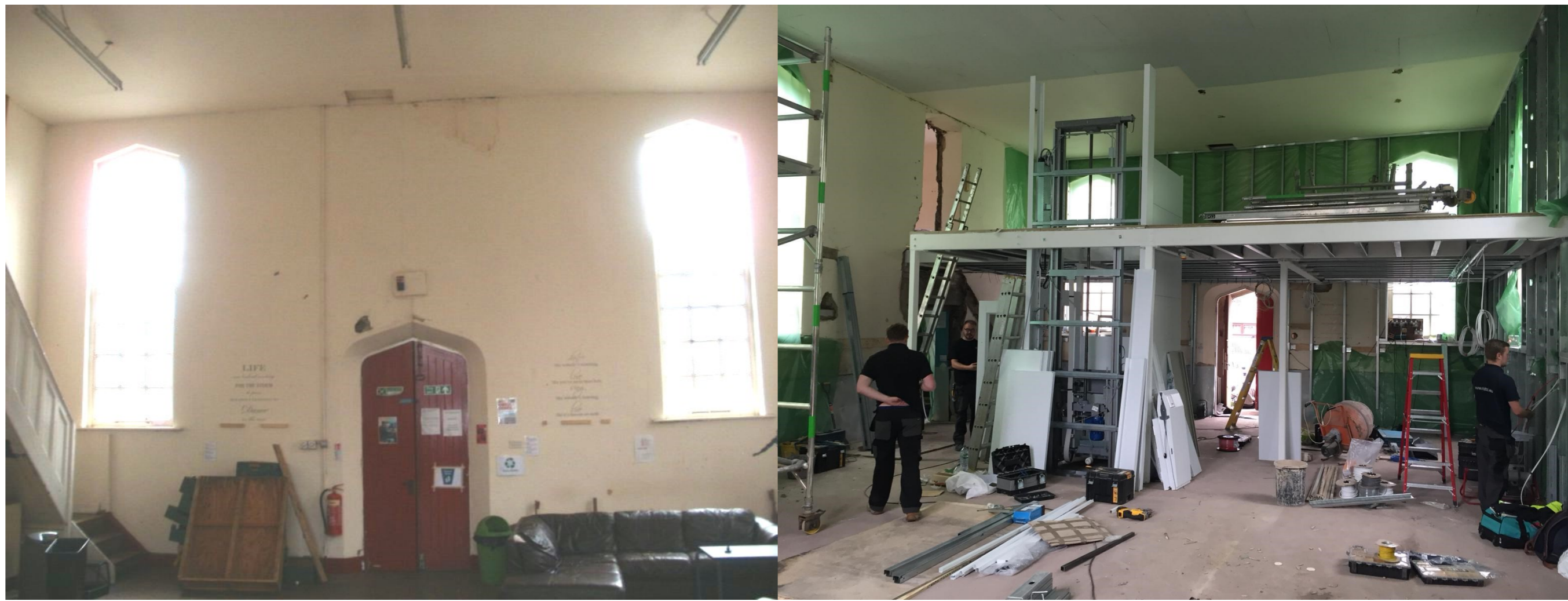




View of the front doors, before and during the construction of the new floor >



The new floor creates space for a meeting room and offices. (Below)

The renovation of St Paul's Community Centre



< View of the stairs, before and after. Now with lift access too!



The kitchen, before and after!

The blue is gone, and the new kitchen will be well used for catering for the groups using the centre and skills training too!



< View of the back yard area and toilet block corridor

View from the gate of the toilet block being demolished (right) and the refurbished back door (far right)



Our new back yard ready for action and new ideas >



The frontage has changed to allow better access for wheelchairs, without changing its historic beauty!